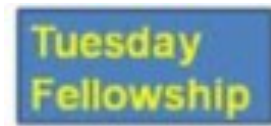


The **Methodist** Church



**Radiate**  
REDDITCH

**Sanctuary Games Cafe**



## Emmanuel Church & Community Centre

What's on guide 2024



6 Evesham Walk, Redditch B97 4EX  
[www.emmanuelchurchredditch.org.uk/](http://www.emmanuelchurchredditch.org.uk/)

The **Methodist** Church



## About us

Emmanuel United Reformed and Methodist Church is part of the Christian presence in Redditch Town Centre and welcomes all irrespective of gender, ethnicity, sexual orientation or disability. Its purpose is to be a worshipping and witnessing community, serving and supporting all and to be committed to the causes of justice and peace and the care of creation.

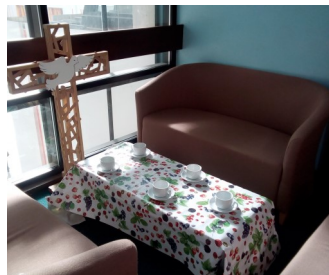
The Ecumenical Centre is an integral part of the mission and ministry by Emmanuel Church.

## What is the Ecumenical Centre?

The Ecumenical Centre is a community facility occupying a unique position on the edge of the Kingfisher Shopping Centre. Located on the second floor, accessed by stairs or two lifts, you will find multiple rooms offering flexible space from small rooms for one to one meetings through to a large multi purpose hall as well as a kitchen and lounge area. The worship space of Emmanuel Church is also on this floor, and is open for private reflection and prayer.



Many local charities and groups hire the facilities in the Centre and along with clubs provided by Emmanuel Church, there is something that covers all areas of the 'Five ways to inner wellbeing'; **connect**—meet with others, **keep learning** - try something new, **be active**—engage in exercise **take notice**—come and have some quiet time, reflect and give thanks and lastly **give**—help out in practical ways or give your time by listening to others.



**Ecumenical Centre staff are available in person  
weekday's 10-12noon except Wednesday's, or after  
these times by calling ahead on 01527 65952**

**Minister**

**Rev. James Hamilton**

**revjamesfhamilton@gmail.com**

**Church and Community Lay Pastor**

**Ruth Wilde**

**Ruth@emmanuelredditch.church**

**Church Centre Manager**

**For group or activity information or room  
booking enquiries contact:**

**Nicki Farnes**

**centreoffice@emmanuelredditch.church**

**Hospitality and Outreach Worker**

**Sharon Forrest**

**sharon@emmanuelredditch.church**



**Ecumenical Centre**

**www.emmanuelredditch.church**

A member of

**churches  
together**  
in Redditch

**Visit us: The Ecumenical Centre  
6 Evesham Walk  
Redditch Town Centre  
B97 4EX**

## What's on by day:

**Monday** - centre office is open 10-12noon for enquiries

- Tots and Co 09:30-11.30am
- Radiate Redditch community meal 4.30-6pm (2nd Monday of the month)

**Tuesday**—centre office is open 10-12noon for enquiries

- Coffee shop 10-12noon
- Fellowship 2.00-3.15pm (4th Tuesday of the month)
- Bible book club 12-1.30pm monthly

**Wednesday**— THE CENTRE OFFICE IS CLOSED

- Strength and Balance 10-11am
- Craft Club fortnightly 1.30-3.30pm

**Thursday**—centre office is open 10-12noon for enquiries

- Coffee Shop 10-12noon
- Redditch Older Peoples Forum 10am (2nd Thursday of the month)
- Worship Service 11am-11.30am
- Tai Chi 1-2pm
- Badminton 8.00-9.45pm

**Friday**— centre office is open 10-12noon for enquiries

- Friday Warm Welcome breakfast 10-12noon
- Indoor Bowls 1.00-3.30pm
- Sanctuary Games Café 5-9pm

**Saturday**— centre office is closed

- Coffee shop 10-12noon (1st Saturday of the month)
- Child Contact Centre –fortnightly by appointment only

**Sunday**- centre office is closed

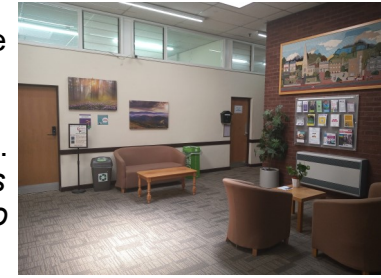
- Emmanuel Church Worship 10.30-11.30am followed by fellowship

For days and times for Rainbows, Brownies, Guides please contact the Church Office on 01527 65952

\*(information correct at the time of going to print)

## The Layout

As you reach the top of the stairs or leave the lift on floor 2, go through the double doors (open 10-12noon weekdays except Wednesday) which will lead you into a reception area. *If you are attending outside of opening hours you will find an intercom system to be used to speak with the organisation you have come to see.*



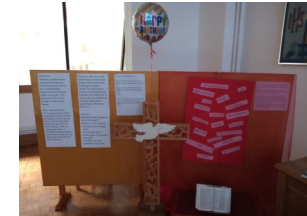
Current resident charities Carers Careline, Disability Support Project (DSP) and Victim Support will be found here in their own offices — there are three other small rooms which are available for hire by the hour.

Moving along the corridor, you enter the carpeted area of the 'upper room' which is used for various activities such as coffee shop, breakfast café, craft club, Sanctuary Games café, toddler group. There is also a fully working kitchen that is available for hire; this is used by the community in a number of ways for example charity fundraising meals or large community gatherings where food is served. The large hall (20mx6m) is used for regular activities such as badminton, bowls, keep fit, toddler group, large community event and visiting theatre groups.

Available to hire as a regular or one off booking, the building is a great Town Centre venue for the benefit of the community. For details on how to hire these facilities contact Nicki Farnes, Centre Office Manager on 01527 65952.

## Church Worship Space: the Sanctuary

A space of modern design, light in decor with moveable chairs, some with armrests offering flexible use of this space. Two large screens and supporting technology allow for visual and sound projection from the front or rear of the staging area. A corner of the Sanctuary is used for displays including a regular prayer area.



## Worship and Pastoral Care at Emmanuel

### Sunday Worship in the Sanctuary

**10:30am Morning worship:** a service of singing, prayers and Bible teaching led by preachers usually from the Methodist/United Reformed Church traditions. Holy Communion is on the 1st Sunday of the month.



### All Age Worship Services

We regularly hold All Age Worship services, where all ages are catered for in worship and teaching.

### C2C

C2C (come to Church) meets every Sunday for children aged 4 and up to explore the Christian faith through age appropriate Bible stories, Godly play, crafts, games, music and prayer time.

### Weekday Midday Prayers (except Thursday)

Join us for midday prayer 12-12.30pm using the Book of Common Worship [www.commonprayer.net](http://www.commonprayer.net)

### Thursday Morning Service 11.00-11.30am

A short informal act of worship with a different weekly focus including Holy Communion, (2nd Thursday) healing & wholeness, music & meditation, justice & peace. Meet in the coffee bar before or after for a time of fellowship.

**Pastoral Care**— pastoral, emotional and spiritual support is in place for members of the congregation, headed up by the Church and Community Lay Pastor Ruth Wilde.

**Small groups** A variety of groups meet in the week for Bible study, prayer and fellowship.

**Fellowship** The Church has a Fellowship meeting once a month that includes a reflection on passages from the Bible, activities or guest speakers.

**Julian Group**—a monthly meeting to practise Christian contemplative prayer and meditation. Speak with Ruth Wilde for details.



There is an active **social** calendar within the church with trips to the theatre, other outings, fundraising events, lunches and suppers.

## Radiate Redditch

Ran by the community and supported by Emmanuel Church, Radiate Redditch helps to provide a safe and sensitive space for those in our community who are vulnerable, isolated or lonely, facing social deprivation, mental illness, addiction or homelessness.

On the 2nd Monday of the month our Community Cafe is open from 4.30pm for anyone who wishes to come in for a free hot meal and drinks, (food is available from 5pm), we close at 6pm.

At Christmas we run a week long cafe

Facebook RadiateRedditch  
Tel 01527 65952

**Redditch Child Contact Centre**, part of the National Association of Child Contact Centres.

Offering a neutral place where children of separated families can enjoy contact with non-resident parents and sometimes other family members, in a comfortable and safe environment. It is free to attend and operates on a Saturday.

For more information contact Elizabeth on 01527 67464



**Radiate**  
REDDITCH

**naccc**  
Redditch Child Contact Centre



## Organisations you will find at the Centre

### Carers Careline

Carers Careline support informal unpaid carers in Red-ditch over the age of 18 by offering information, advice signposting, training, meetings, events, outings, telephone support, drop in, counselling & bereavement support.

For further information contact 01527 66177

[www.carerscareline.co.uk](http://www.carerscareline.co.uk)



### Disability Support Project

Disability Support Project can assist disabled people and their carers/relatives in various ways. An advice line, well-check service, form filling, tribunal representation, budgeting and debt advice are just some of the services.

Tel 01527 351021

[www.dspuk.org.uk/](http://www.dspuk.org.uk/)



### Victim Support:

Victim Support is an independent charity dedicated to supporting victims of crime and traumatic incidents

01527 66462 or 01905 726896

[www.victimsupport.org.uk/](http://www.victimsupport.org.uk/)



## Emmanuel Church Groups & Activities

### Coffee & Snacks

Open weekdays Tuesday and Thursday 10am to 12noon.

Our thriving coffee bar serves a selection of fair-trade product, hot drinks are just £1. Enjoy our comfortable surroundings. Bring a book or chat with our friendly regulars, volunteers and staff.



### Friday Warm Welcome

A partnership between Emmanuel Church and charity DSP, come and enjoy a cooked breakfast from just £3.50 served 10-12noon.

### Breakfast



### Tots & Co

Every term time Monday morning from 9.30 -11.15am in the large hall for the 0-5's and their parents or carers. Toys, crafts, story, messy play and rhyme time. £2.00 per family for up to 2 adults and 2 children, .50p for each additional child. The cost includes a healthy bowl of snacks and drink and a hot drink for the adults.



### Craft Club

Meets alternate Wednesday afternoons—1.30-3pm in the coffee bar area. Materials provided or bring your own. Refreshments provided, call 01527 65952 for more information.



### Bible Book Club

Using the Bible Society resources, we meet monthly to discuss a book of the Bible.



## What else is on and things to do at the Ecumenical Centre

### Tuesday Fellowship

Meets 4th Tuesday of the month 2.00-3.15 pm in the coffee bar area. A time of worship, fellowship and refreshments. Open to all. Contact: Ruth Wilde Church and Community Lay Pastor.

### DSP—Sanctuary Games Cafe

A great night of fun and games between 12 noon -9pm

DSP have over 100+ board games to choose from and have training available for newbies. It is currently free to attend and refreshments are available through the café and tuck shop.

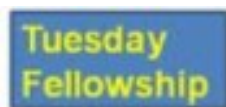
### Tai Chi gentle exercise with qualified instructor

Age UK offers Tai Chi classes every Thursday, 1-2pm, a popular form of exercise, call before attending to check availability. Telephone Age UK office 01527 868855.

### Redditch Older Peoples Forum

Meets 2nd Thursday of the month at 10am in the hall—A group for over 55s supported by Redditch Borough Council, Worcestershire County Council and Age UK. Come and hear of services available to older people in our Town and enjoy outings and social events.

We are blessed to have all groups using our venue for **Girlguiding** activities. For further information go to [www.girlguiding.org.uk](http://www.girlguiding.org.uk) or telephone the Church Centre office 01527 65952



## Sanctuary Games Cafe

## Tai Chi



### Indoor Bowls

Meets every Friday in the Hall 1.00-3.30pm. For those with knowledge of bowling or beginners. Cost is £2.50 to include refreshments. Pop in and have a chat with members of the friendly bowls team to find out more.

### Social Prescribers

Social Prescribing is a service working from GP surgeries across Worcestershire for anyone aged 18 years who would like to be less isolated and out in the community more.

A warm welcome awaits at this meeting held on the last Tuesday and Thursday of the month 10.30am-12noon.

### Strength and Balance Gentle Keep Fit with qualified instructor

Carers Careline run a gentle keep fit session to help people keep moving and improve strength and balance. Open to everyone, the cost is £3.00

Wednesday Mornings 10-11am

Contact [info@carerscareline.co.uk](mailto:info@carerscareline.co.uk) or phone 01527 66177

### Badminton

Meets every Thursday from 8:00pm till 9.45pm cost £1.50. If you are interested in attending, in the first instance please contact the Church Centre Manager on 01527 65952

### Life Drawing

Takes place on the Third Wednesday of the month (subject to change) at 7pm. 18+, all abilities welcome cost £8 @RedditchLifeDrawing for information



## Social Prescribers



## Life Drawing